



**CURBCO**



**APPROVED DRAWINGS**

## READING CURBCO SUBMITTAL DRAWINGS

1

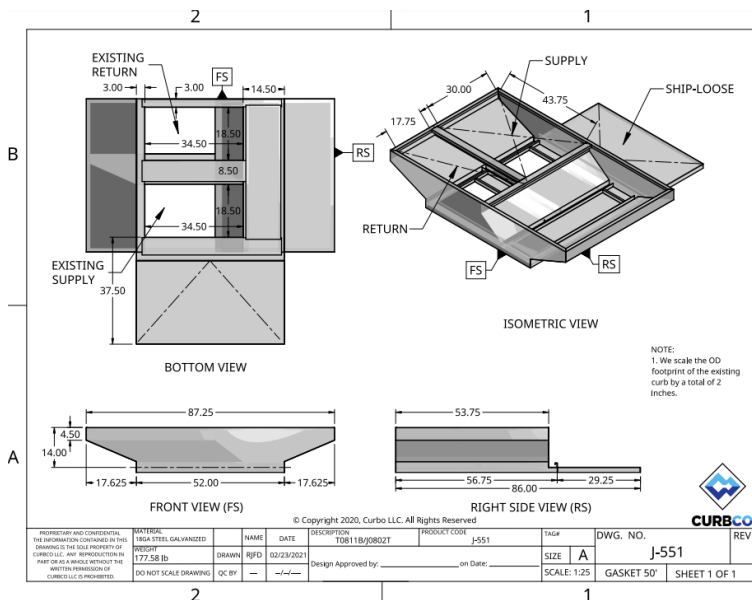
Curbco's Submittal Drawing can be divided into six parts, the four main views where all the necessary measurements of the unit are found (**Front, Right Side, Bottom, Isometric**), the **Title Block** and the **Notes** section.

2

The **FRONT (SIDE) VIEW (FS)** and **RIGHT SIDE VIEW (RS)**, found on Quadrants 2A & 1A, contain the Outer Dimensions (**O.D.**) for the New Curb (upper side) and the Bottom of the adapter (lower side). Also found here is the **Neck Height** and the **Overall Height** from the top of the existing curb to the bottom of the RTU.

3

The **BOTTOM VIEW**, located on quadrant 1B, shows the dimensions for the bottom of the adapter. The **EXISTING SUPPLY** and **EXISTING RETURN** are labeled with their corresponding dimensions and positions. The location of the **Front View (FS)** and **Right Side View (RS)** are also marked as orientation guides.



The **ISOMETRIC VIEW** is where the **RETURN** and **SUPPLY** of the Curb adapter are identified with the dimensions of the top openings. The supply duct is marked with an "X" in dashed line and the return duct is marked with a "I" in dashed line similar to engineering blueprints.

4

When the curb adapters does not cover the old curb completely, we provide panels called E-Panels or Extra Panels. These will include a note "Ship Loose" to help all parties know there will be loose panels included with adapter. Other notes or special requests are also added to the drawing.

5

The **Title Block** is where all the other essential details of the unit are listed including the weight, material used, gasket size, old and new curb patterns, etc..

6

Additional details are provided in the **NOTES** section to clarify information for the user of the drawing.